

Electric diamond core drilling machine with micro-pulse technology

REMS PICUS DP

For core drilling without water. Clean, easy, fast.

REMS

for Professionals

since
1909



With micro-pulse technology. For core drilling without water.

Clean, easy, fast, e.g. 200 mm in steel-reinforced concrete
Ø 62 mm in only 5 min.



REMS Picus DP. With micro-pulse technology

For core drilling without water.

REMS Picus DP is a universal, handy diamond core drilling machine with micro-pulse technology. For dry drilling, without water, hand-held or with drilling stand. In combination with the REMS Pull M vacuum cleaner, it is ideal for making core bores in finished rooms, e.g. in residential, office and industrial buildings. For core drilling in steel-reinforced concrete $\leq \varnothing 162$ (200) mm, masonry and other materials $\leq \varnothing 202$ mm. The large working area, the low weight and the connectible and disconnectible micro-pulse technology make the machine unique in handling and operation. Its compact design enables it to be used anywhere, even in tight corners and flush with the wall. The robust and powerful universal motor with 2200 W enables fast working, e.g. core drilling 200 mm in $\varnothing 62$ mm steel-reinforced concrete in just 5 min.

- 1 Especially for dry drilling**
Drive machine with micro-pulse technology, specially developed for dry drilling, hand held or with drill stand. Can be used anywhere, in narrow angles, flush with the wall. Suitable for many, especially hard materials. For pipe-line and cable ducting, ventilation channels, test core drilling.
- 2** Robust, suitable for the building site.
Extra light, only 7 kg.
- 3** Practical spade handle and stabiliser for hand held drilling.
- 4** Integrated suction rotor for dust extraction with connection for REMS Pull M and other suitable vacuum cleaners.
- 5** Throat $\varnothing 60$ mm for holding the drive machine in the drill stand.
- 6** Robust, powerful 2200 W universal motor.
- 7** Load speed drilling spindle 880 rpm.
- 8** Stable, maintenance-free gear. Blocking protection by safety slip clutch.
- 9** Tip switch with lock.
- 10** Multifunction electronics with start-up current limiting for soft starting for delicate drilling start, automatic idle speed limiting for noise reduction and preservation of the motor, overload and blocking protection for motor and gear.
- 11** Drilling crown connection threads
UNC 1 1/4 male and G 1/2 female.



12 Micro-pulse technology

Micro-pulse technology can be switched on and off: Pulse disc with 24 teeth generates 28,800 pulses min⁻¹ in idle mode at 1,200 min⁻¹, under load at 880 min⁻¹ 21,120 pulses min⁻¹.

13 Dry diamond core drilling crowns LS

Especially for dry drilling with core drilling machines with micro-pulse technology, laser welded, high temperature-resistant, for drilling without water, see accessories.

14 Drill stand

REMS Simplex 2 or REMS Titan drill stands can be used optionally, see accessories.

15 Dust extraction in accordance with EN 60335-2-69

Suction of health hazardous dusts during dry drilling. Suction rotor for dust extraction in dry drilling with connection for REMS Pull and other suitable extractors, as accessory.

16 Drilling start aid G ½ TDKB, with bores for extracting the drilling dust from the bore hole, with carbide masonry drill Ø 8 mm.

In combination with the REMS Pull M vacuum cleaner, ideal for making core bores in finished rooms, e.g. in residential, office and industrial buildings.



Accessories



REMS Picus DP drive unit

Art.-No. 180003 R110G

Steel case with inlay

Art.-No. 180600 RDP



Titan drilling template for easy setting of the fastening holes. For REMS Titan drilling stand.

Art.-No. 183605 R



Carbide masonry drills Ø 15 mm SDS-plus for hammer anchors M12

Art.-No. 079018



Hammer anchor M12 (pack of 50), for concrete

Art.-No. 079005 R50



Setting iron for hammer anchor M12

Art.-No. 182050 R



Carbide masonry drill Ø 20 mm SDS-plus for splaying anchors M12

Art.-No. 079019



Splaying anchor M12 (pack of 10), for masonry, reusable

Art.-No. 079006 R10



Quick clamping set 160 for fastening the drilling stand with anchors, consisting of cord threaded bar 160 mm with M12 × 52 thread, quick clamping nut, washer

Art.-No. 079010



Quick clamping set 500 for fastening the drilling stand without anchor, consisting of cord threaded bar 500 mm, 2 quick clamping nuts, 2 washers

Art.-No. 183607 R



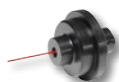
Titan vacuum fastening, consisting of cover plate with nipple for $\frac{3}{8}$ " screw connection and sealing ring for base plate.

Art.-No. 183603 R



Vacuum pump, for vacuum ≤ -900 mbar (90%), consisting of dry running rotary slide pump, oil-free, performance 6 m³/h, condenser motor 230 V, 50–60 Hz, 250 W, splash water-protected, inside suction filter with silencer function and 5 m PVC fabric hose with bayonet coupling.

Art.-No. 183670 R220



Laser drilling centre pointer

Art.-No. 183604 R



Drilling start aid G $\frac{1}{2}$ TDKB, with bores for extracting the drilling dust from the bore hole, with carbide masonry drill Ø 8 mm

Art.-No. 180145 R



Carbide masonry drill Ø 8 mm for drilling aid

Art.-No. 079013



Single open ended wrench size 41 for loosening the universal diamond core drilling crowns

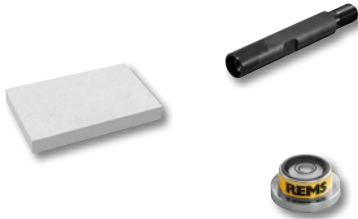
Art.-No. 079003



Light loosening ring, for light loosening of the diamond core crown

Art.-No. 180015

Accessories



Drilling crown extension 200 mm

Art.-No. 180155 R

Sharpening stone for diamond core drilling crowns

Art.-No. 079012

Bull's eye level, magnetic, for aligning the drill stand

Art.-No. 182010 R



REMS Pull M Set, dry and wet extractor, certified as extractor and dust extractor for extracting health hazardous dusts in accordance with EN 60335-2-69

Dust class M. Exposure limit/work place limit > 0.1 mg/m³, penetration level ≤ 0.1 %.

Art.-No. 185501 R220



REMS Simplex 2. Robust, handy drilling stand for core drilling up to Ø 202 mm. With tools comprising Allen key size 6, single open ended wrench size SW 19 and SW 30 and fastening kit for masonry and concrete, consisting of 2 M12 splaying anchors, 10 M12 hammer anchors for concrete, setting iron for M12 hammer anchors, cord threaded bar M12 × 52, quick clamping nut, washer, carbide masonry drill Ø 15 mm SDS-plus in box.

Art.-No. 183700 R

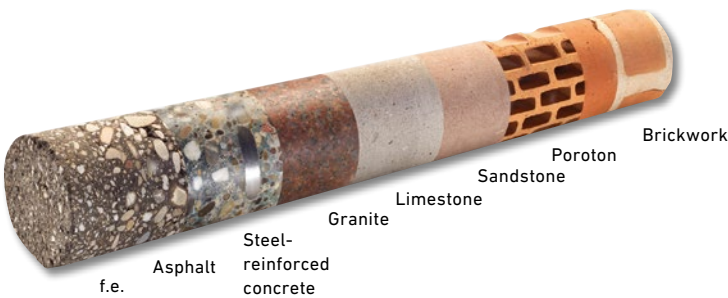


REMS Titan. Robust, highly stable drilling stand for core drilling in steel-reinforced concrete and other materials up to Ø 300 mm. Continuously tiltable with degree scale up to 45°. With tools comprising Allen key size 6, single open ended wrench size SW 19 and SW 30 and fastening kit for masonry and concrete, consisting of 2 M12 splaying anchors, 10 M12 hammer anchors for concrete, setting iron for M12 hammer anchors, cord threaded bar M12 × 52, quick clamping nut, washer, carbide masonry drill Ø 15 mm SDS-plus in box.

Art.-No. 183600 R

High quality dry diamond core drilling crowns LS. Especially for dry drilling with core drilling machines with micro-pulse technology.

Universally usable for many materials, hand held or with drill stand. Single connecting thread UNC 1¼ female. Drilling depth 320 mm. Specially developed, high quality diamond segments with high diamond percentage and special bonding, for excellent drilling performance and very long life. Ideal for universal applications in steel-reinforced concrete and masonry. Driven by a REMS Picus DP drive unit with micro-pulse technology and suitable drive units of other makes with a UNC 1¼ outer connecting thread. Use REMS Pull M for high-performance extraction of drilling dusts from the drilling gap during dry drilling. The REMS Pull M safety vacuum cleaner is certified for extracting health hazardous dusts of dust class M.

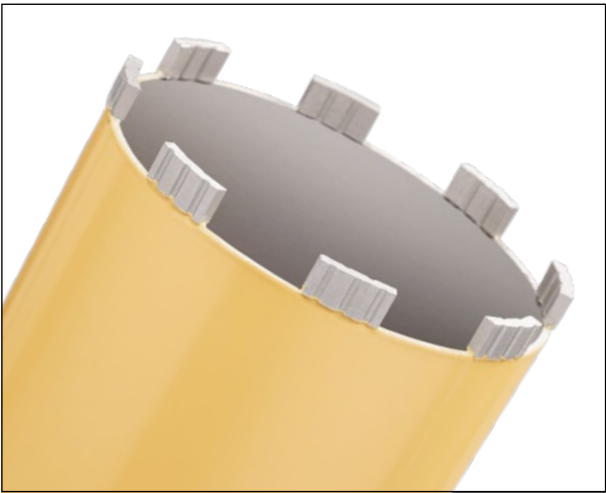


Laser welded!
High temperature-resistant!



REMS dry diamond core drilling crowns LS.

Laser welded, high temperature-resistant. Especially for dry drilling with core drilling machines with micro-pulse technology, e.g. REMS Picus DP, hand held or with drill stand. For many materials, e.g. concrete, steel-reinforced concrete, all kinds of masonry, natural stone, asphalt, all kinds of screed. Connecting thread UNC 1¼ female. Drilling depth 320 mm. In a carton.



Ø × drilling depth × connection		Art.-No.
TDKB LS 32 × 320 × UNC 1¼	3	181500 R
TDKB LS 42 × 320 × UNC 1¼	4	181502 R
TDKB LS 52 × 320 × UNC 1¼	5	181504 R
TDKB LS 62 × 320 × UNC 1¼	5	181506 R
TDKB LS 72 × 320 × UNC 1¼	6	181508 R
TDKB LS 82 × 320 × UNC 1¼	6	181510 R
TDKB LS 92 × 320 × UNC 1¼	6	181512 R
TDKB LS 102 × 320 × UNC 1¼	7	181514 R
TDKB LS 112 × 320 × UNC 1¼	7	181516 R
TDKB LS 122 × 320 × UNC 1¼	8	181532 R
TDKB LS 127 × 320 × UNC 1¼	8	181518 R
TDKB LS 132 × 320 × UNC 1¼	8	181520 R
TDKB LS 142 × 320 × UNC 1¼	8	181522 R
TDKB LS 152 × 320 × UNC 1¼	8	181524 R
TDKB LS 162 × 320 × UNC 1¼	9	181526 R
TDKB LS 182 × 320 × UNC 1¼	9	181528 R
TDKB LS 202 × 320 × UNC 1¼	10	181530 R

REMS Picus DP



REMS Picus DP Basic-Pack. Electric diamond core drilling machine with micro-pulse technology for core drilling without water in concrete, steel-reinforced concrete $\leq \varnothing 162$ (202) mm, masonry and other materials $\leq \varnothing 202$ mm, hand held or with drill stand. Drive unit with drilling crown male connection thread UNC 1 ¼, female connection thread G ½, maintenance-free gear with safety slip clutch, 110 V / 230 V, 50 – 60 Hz, 2200 W universal motor, integrated dust extraction. Multifunction electronics with soft starting, idle speed limiting, overload protection, blocking protection. Touch switch with lock. Load speed drilling spindle 880 rpm. Stabiliser. Drill start aid G ½ TDKB with $\varnothing 8$ mm drill, size 3 Allen key. Size 32 opened ended wrench. In sturdy steel case.

Art.-No. 180016 R110G



REMS Picus DP Set Simplex 2. REMS Picus DP Basic-Pack with REMS Simplex 2 drilling stand including tools and fastening kit for masonry and concrete.

Art.-No. 180033 R110G



REMS Picus DP Set Titan. REMS Picus DP Basic-Pack with REMS Titan drilling stand including tools and fastening kit for masonry and concrete.

Art.-No. 180035 R110G



REMS Picus DP/Pull M Set-Pack. REMS Picus DP Basic-Pack, Art.-No. 180016 R110G, and REMS Pull M Set, Art.-No. 185501 R220.

Art.-No. 180034 R220G

Sale through specialist dealers.



REMS (U.K.) LIMITED

Unit 5 · Ash Industrial Estate
Flex Meadow · Harlow
Essex CM19 5TJ
Phone +44 (0)1279 413698
Fax +44 (0)1279 413704
www.rems.de
GBR@rem.de



www.rems.de



@remstools

